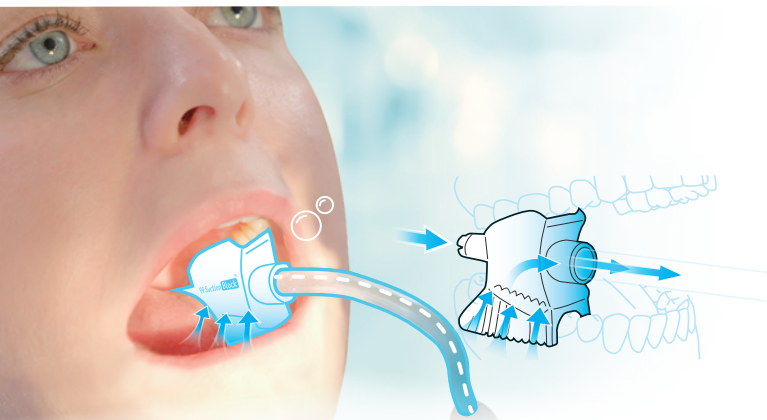


User Manual

99 Suction Block®



This product is a professional medical device, intended for use only in dental treatment environments.



DENTOZONE CORPORATION

#1011, Ace High-end Tower 1 cha, 5, Digital-ro
26-gil, Guro-gu, Seoul, 08389 S.KOREA
TEL : +82-868-2875 FAX : +82-2-867-3456
www.dentozone.co.kr
www.dentozone.com



EU Representative

CMC Medical Devices & Drugs SL
C/ Horacio Lengo N18, Malaga, Spain



#1011, Ace High-end Tower 1 cha, 5, Digital-ro
26-gil, Guro-gu, Seoul, 08389 S.KOREA

This manual was prepared with reference to CDC, ADA, and ISO 17664 guidelines, and does not replace any applicable national regulations.



Website



User Guide Video

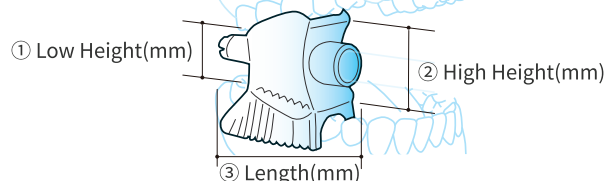
Rev. 250201 / Printed in Korea

Product Introduction

The 99 Suction Block is a medical-grade silicone product that combines the functions of a mouth prop and suction. It ensures stable mouth opening and provides automatic suction, improving treatment efficiency.

Size Guide

Measurement Item	Small	Medium	Large	X-Large
① Low Height (mm)	12	14	20	24
② High Height (mm)	21	28	32	34
③ Length (mm)	40	48	50	56
Recommended Selection	• Infants, • Pediatric patients	• Teenagers • Adults	• Patients with a large oral cavity	• Cases requiring wider opening



- Select based on the patient's oral cavity size and treatment area at the discretion of the clinician.

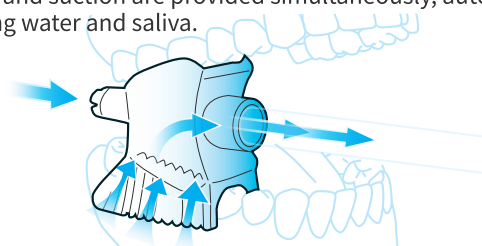
How to Use?

① Mouth Prop Function

- Stabilizes between the upper and lower teeth to allow secure mouth opening.

② Mouth Prop + Suction Function

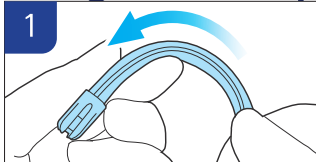
- When a suction tip or suction connector is attached, both mouth opening and suction are provided simultaneously, automatically aspirating water and saliva.



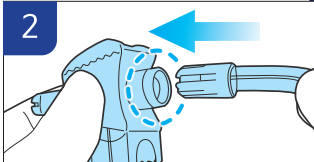
- Insert the block on the molar opposite to the treatment site.

⚠ This product should only be used under the supervision of a licensed dental professional.

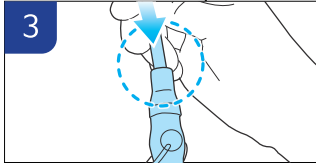
Using with a Disposable Suction Tip



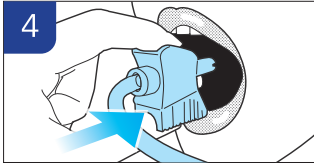
Bend the suction tip into a U.



Insert it into the 99 Suction Block.

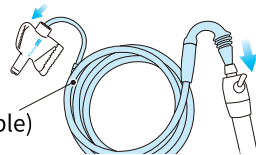


Connect to the suction hose(SEV). Fix gently in the patient's mouth.



- Provides simultaneous mouth opening and suction
→ reduces gag reflex and enables efficient aspiration.
- Transparent 99 Suction Block
→ autoclavable (steam sterilizable).
- For greater convenience, use with a separately available suction connector (autoclavable type).

Optional / Suction Connector (Autoclavable)



Safety Precautions

- ⚠ Always confirm sterilization status before and after use.
- ⚠ Avoid excessive force or strong impact.
- ⚠ Patients with strong gag reflex, limited opening, or loose teeth require caution (use only under dentist's judgment).
- ⚠ If pain, discomfort, or airway obstruction occurs, stop immediately and switch to an appropriate size.
- ⚠ If suction is weak: check U-shaped tip insertion, line blockage, or suction power.
- ⚠ Children must be supervised by a guardian or staff during use.

※ This device is reusable. For each reuse, the cleaning and sterilization procedures in this manual must be followed.

Cleaning & Sterilization Procedure



① Rinse Immediately After Use

Rinse under running water immediately after the procedure for primary cleaning.



② Detergent Cleaning (Brush/Ultrasonic)

Use an enzymatic or neutral detergent with either a brush or ultrasonic cleaner.



③ Drying (≥15 min)

Thoroughly dry for at least 15 minutes to remove residual moisture.



④ Autoclave Sterilization

121°C for 15~20 minutes



⑤ Storage (Clean, Dry Environment)

Store in a clean and dry environment after sterilization.

⚠ Cautions

- Do not use chemical disinfectants (e.g., glutaraldehyde).
- Do not use surface disinfectants (e.g., ethanol, isopropanol).
- Do not use abrasive scrubbers or sharp brushes.

FAQ & Replacement

Lifespan Management (50 Uses)

Q1. Suction is weak.

A1. Check the U-shaped insertion of the suction tip, suction performance, and any line blockages.

Q2. Deformation after sterilization.

A2. Verify autoclave temperature/time. If deformation, cracks, or reduced elasticity occur, replace immediately.

Q3. Patient feels discomfort.

A3. Adjust size, reposition insertion (opposite molar), and check insertion angle.

Usage Lifespan / Replacement Criteria

- **Maximum reuses: 50 times** (based on durability testing).
- **Replace immediately if discoloration, loss of elasticity, micro-damage, or cracks appear, even before 50 uses.**
- Actual lifespan may vary depending on usage conditions and environment.