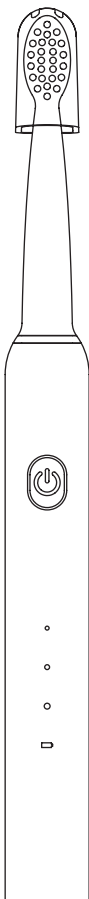


SmileGoods®

SoniPal™ Sonic Toothbrush

USER MANUAL

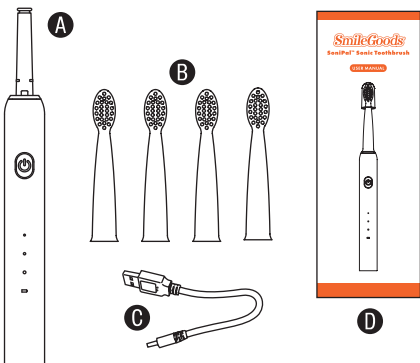


Instructions for Use

Thank you for purchasing the **SmileGoods SoniPal Sonic Toothbrush**. Your SoniPal is ready to help keep your smile clean and fresh. DuPont™ Tynex® bristles provide gentle, effective cleaning to start a lifetime of healthy smiles.



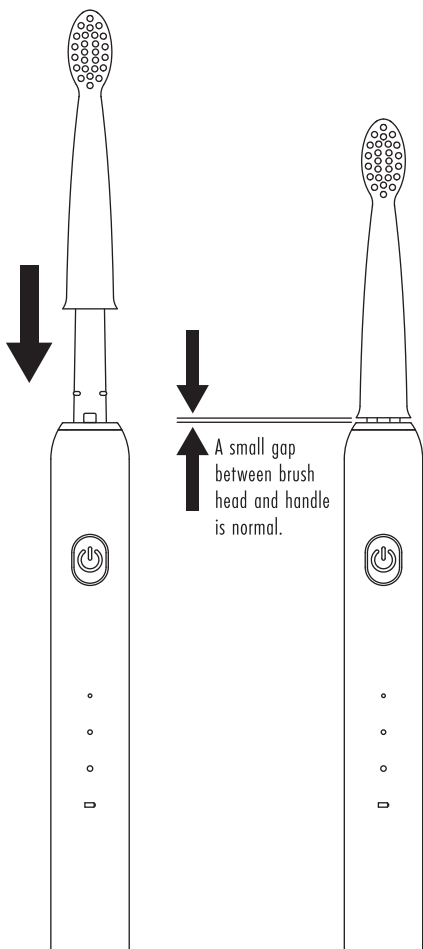
Please read and understand all instructions before using this device, and save this manual for your reference. This manual is subject to change without notice.



PACKAGE CONTENTS

Item	Description	Qty
A	Power Handle	1
B	Brush Head	4
C	USB 2.0 Charger Cable	1
D	User Manual	1

Install brush head by pushing it onto power handle.



Charge for 3 hours before first use.

TRAVEL COVER



THREE POWER MODES

Low Power >>

To develop toothbrushing habits and gently clean.

Medium Power >>

To protect primary teeth and sensitive gums, and begin proper cleaning.

High Power >>

To clean and polish permanent teeth, clean better between teeth, and remove stains.

POWER HANDLE

BRUSH HEAD

POWER BUTTON



LEVEL INDICATORS



BATTERY INDICATOR

When battery charge is low, LED indicator flashes **RED**.



CHARGING PORT



Squeeze appropriate amount of toothpaste onto brush head. A pea-sized portion is enough for children.



Place brush in mouth, then press power button. Press once for Low Power, press twice for Medium Power, press three times for High Power. Press again to turn toothbrush OFF.

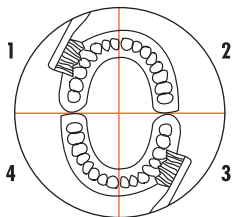
SoniPal will pause briefly after each 30 seconds of use to indicate it is time to brush the next mouth quadrant. SoniPal will turn OFF automatically after 2 minutes.

30sec

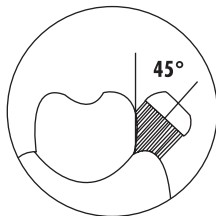
30-second
interval pauses

2min

2-minute
shut-off timer



Move brush head up and down. Do not press hard and do not scrub the teeth. Dental professionals recommend holding bristles at a 45° angle to the teeth.



Rinse brush head after each use and store in vertical position in a dry location.

PRODUCT SPECIFICATIONS

Information	Specifications
Device Name	SmileGoods SoniPal Sonic Toothbrush
Battery	Rechargeable 3.7V lithium-ion
Battery Charger	USB 2.0 (cable included)
Charging Time	3 hours (full charge)
Dimensions	0.875" Dia x 9"H (2.2cm x 22.9cm)
Device Weight	1.9 oz. (54g)
Protection from Ingress of Liquid	IPX7



AMBIENT CONDITIONS

Do not expose the device to any heat sources. Do not charge, operate, or store the device at high temperatures. Comply with the specified operating and storage conditions.



BATTERY

Do not store at temperatures above 104°F (40°C). If unit is stored six months or longer, recharge battery fully before using.



DISPOSAL

For environmental reasons, please dispose of unit according to local environmental guidelines or regulations regarding lithium-ion batteries. Do not dispose of unit in fire.



REPAIRS AND DEFECTS

Do not use the device if you suspect it is damaged or defective. If batteries are defective, do not transport the device by air under any circumstances.

Manufactured for

PRACTICON

PRACTICAL INNOVATIONS FOR DENTISTRY

1-800-959-9505 • Fax 1-800-278-0885

practicon.com • Greenville, NC 27834

Made in China